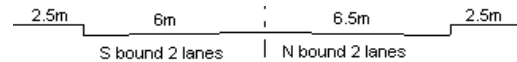


YEAR

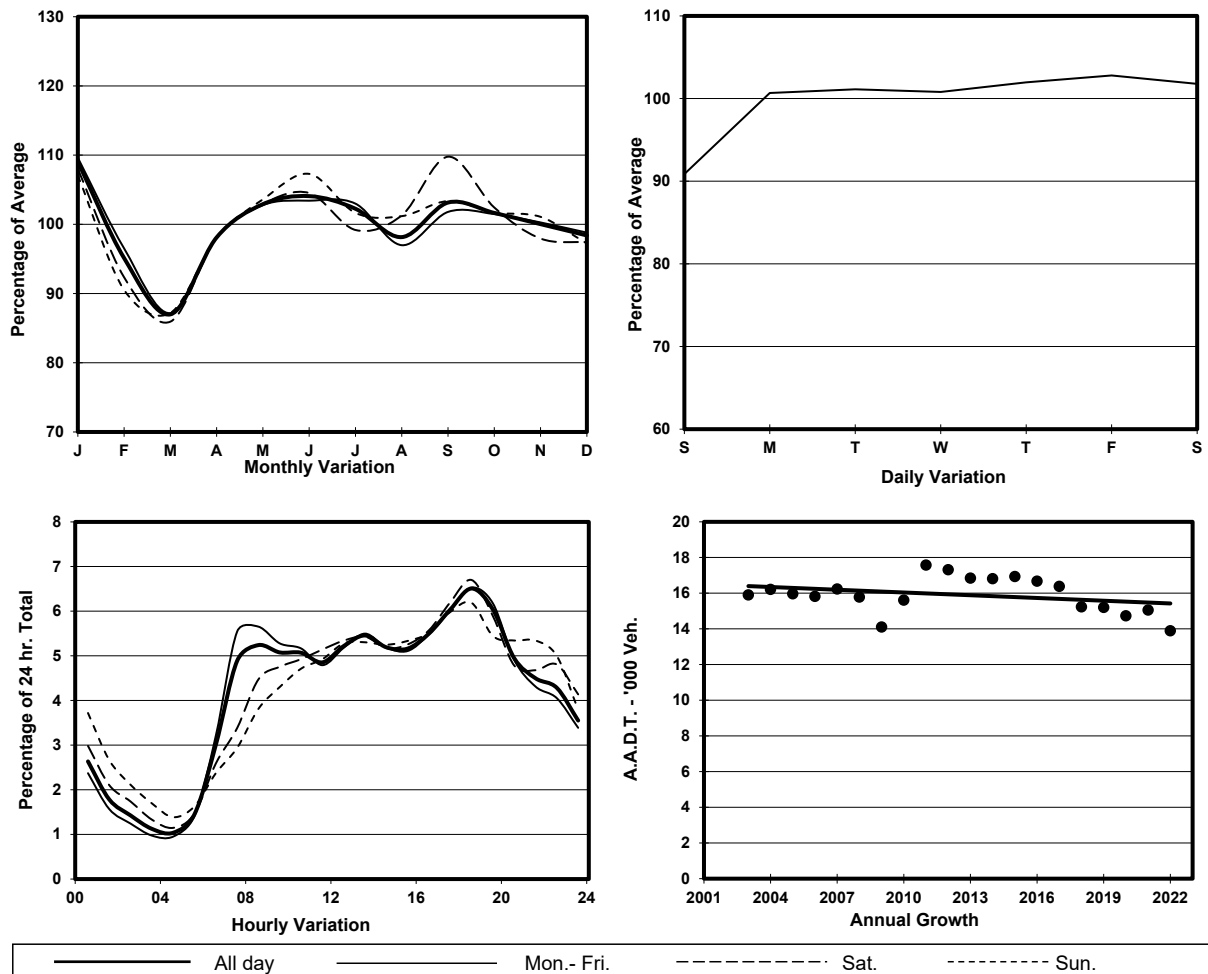
2022

LINK

HIU KWONG ST (from SAU MING RD to HIP WO ST)

CORE STATION  
ROAD NETWORK  
ROAD TYPE3018  
MAJOR  
DISTRICT DISTRIBUTOR

## 1. TRAFFIC FLOW VARIATION AND GROWTH



## 2. TRAFFIC CHARACTERISTICS (BY DIRECTION)

Parameter	All - Day	Mon. - Fri.	Sat.	Sun.
<b>SOUTH BOUND</b>				
A.A.D.T.	6630	6750	6790	6070
R 12 / 24 - %	63.8	64.8	62.3	59.9
R 16 / 24 - %	84.9	85.7	83.6	82
AM Peak Hour	0900-1000	0900-1000	0900-1000	0900-1000
One-way flow at AM peak hour	330	350	320	260
T - % (AM)	-	-	-	-
PM Peak Hour	1800-1900	1800-1900	1800-1900	1800-1900
One-way flow at PM peak hour	480	500	500	400
T - % (PM)	-	-	-	-
Prop.of commercial vehicles - 16 hr.	-	-	-	-
<b>NORTH BOUND</b>				
A.A.D.T.	7260	7420	7410	6630
R 12 / 24 - %	64.6	66	62.4	59.2
R 16 / 24 - %	83.2	84.2	81.5	79.4
AM Peak Hour	0800-0900	0800-0900	0900-1000	0900-1000
One-way flow at AM peak hour	410	460	360	290
T - % (AM)	-	-	-	-
PM Peak Hour	1700-1800	1700-1800	1800-1900	1800-1900
One-way flow at PM peak hour	430	440	450	390
T - % (PM)	-	-	-	-
Prop.of commercial vehicles - 16 hr.	-	-	-	-

## 3. OTHER INFORMATION AND COMMENT